

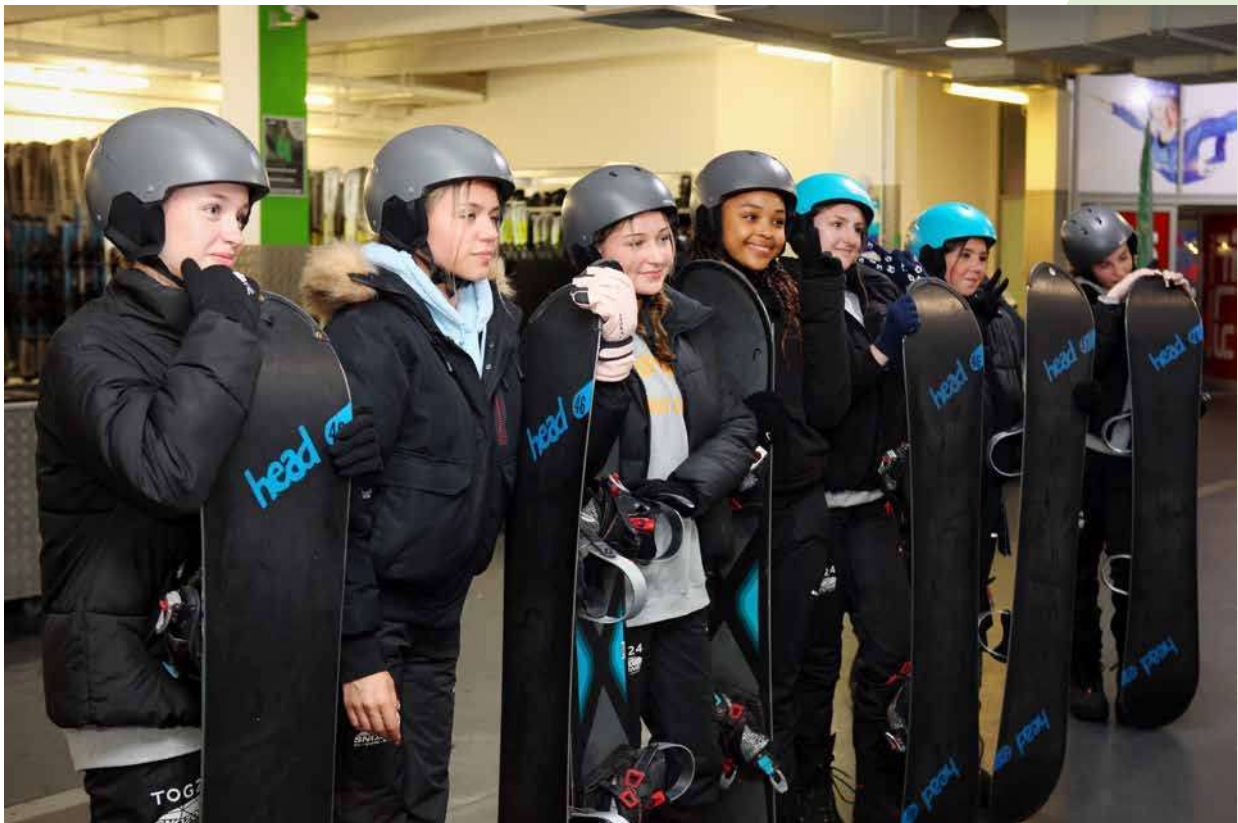


EDUCATION@SNOZONE

WELCOME TO SNOZONE! WE OFFER AN ARRAY OF UNIQUE EDUCATIONAL ACTIVITIES!

Snozone is Europe's leading indoor destination for snow sports on real snow, located in the Xscape Leisure Centres in Milton Keynes and Yorkshire and the Xanadu Centre in Madrid.

All our activities are available for everybody regardless of their physical ability or disability, or mental impairment.



SUPPORTING THE NATIONAL CURRICULUM

As proud five-time winners of the School Travel Award for 'Best Sporting Venue' Snozone has a rich history of supporting schools to deliver exceptional experiences for their students outside the classroom.

We have a vast array of activities that support the National Curriculum and in turn, help support children to develop their personal and social skills, self-confidence, resilience and of course, their development in skiing or snowboarding.

Not only can the experience be invigorating and exciting, but there are also a wealth of benefits for each participant's physical and mental health and their wellbeing.

The recent National Curriculum review and Department for Education Policy updates have highlighted the vital role learning outside the classroom opportunities play in supporting education for everyone and especially students with SEND.

Snozone are committed to ensuring our activities and venues are accessible to all and are especially proud of our Snozone Disability Snowsports team.



**5-TIME SCHOOL TRAVEL
AWARD WINNER FOR
BEST SPORTING VENUE**



WE ARE PROUD TO HAVE HELD THE LEARNING OUTSIDE THE CLASSROOM (LOTC) QUALITY BADGE SINCE 2022



The Council for Learning Outside the Classroom is a registered charity existing to champion Learning Outside the Classroom (LOtC), as recognised by the Department of Education.

The LOtC Quality Badge is the **only** national accreditation that recognises good quality learning and safety provision from providers that deliver educational activities outside the traditional classroom environment.

The assessment process provides schools with the confidence that the learning and activities provided will meet or surpass the high standards of education supplied by schools themselves.

Quality Badge awarded by



GCSE ASSESSMENTS

We provide assessments for students choosing the options to ski or snowboard as part of their coursework for GCSE physical education.

Students no longer need to go abroad at great expense to attain their assessments as we can provide this to superior safer standards here at our venues in Milton Keynes and Yorkshire.

We will provide in-depth feedback, written notes befitting the exam body's criteria and a video of the student's progress. We will provide an experienced BASI qualified Coach to deliver the activity and assessment.

The Coach will have experience delivering these assessments for AQA, OCR and Edexcel exam bodies.

The student will be encouraged to assess their own ability and make suggestions of how they can improve.

The Coach will enhance these self-assessments and provide the full tuition applicable to the student's needs.

Later in the session, the student is filmed carrying out their ski or snowboard skills and feedback is given by the Coach.

For both skiing and snowboarding, the Coach will assess the student's technique over a variety of skills on varying terrain, according to the assessment criteria.

Who for?	GCSE Students
Curriculum Links	GCSE PE
Duration	2-hours
Cost	First student £159.99, £49.99 for each additional student
Group Sizes	Maximum 4 per group



SUPPORTING GCSE AND A'LEVEL BUSINESS STUDIES

Snozone is a thriving business that has a solid operational governance, robust operating procedures and a track record of commercial growth making it a great case study for students of GCSE or A'Level Business Studies.

Our Directors will bring to life all the key components of our business in an engaging and interactive 90-minute talk:

- An overview of who we are and what we do.
- Our company values and our brand standards.
- Our operating structure and accountabilities across our business.
- Our service proposition.

- The 'service profit chain' model and how we use it.
- How we manage our people.
- How we generate income and manage costs to be profitable.
- How we measure the success of performance.
- How we have built a responsible business (ESG).

Who for?	GCSE/A'Level Business Studies Students
Curriculum Links	GCSE/A'Level Business Studies
Duration	1.5 hours
Cost	£199.99 per session
Group Sizes	Up to 50 students



ASSESSING THE DUKE OF EDINBURGH BRONZE AWARD

Snozone are an accredited centre for the Duke of Edinburgh (DofE) Bronze Award Scheme.

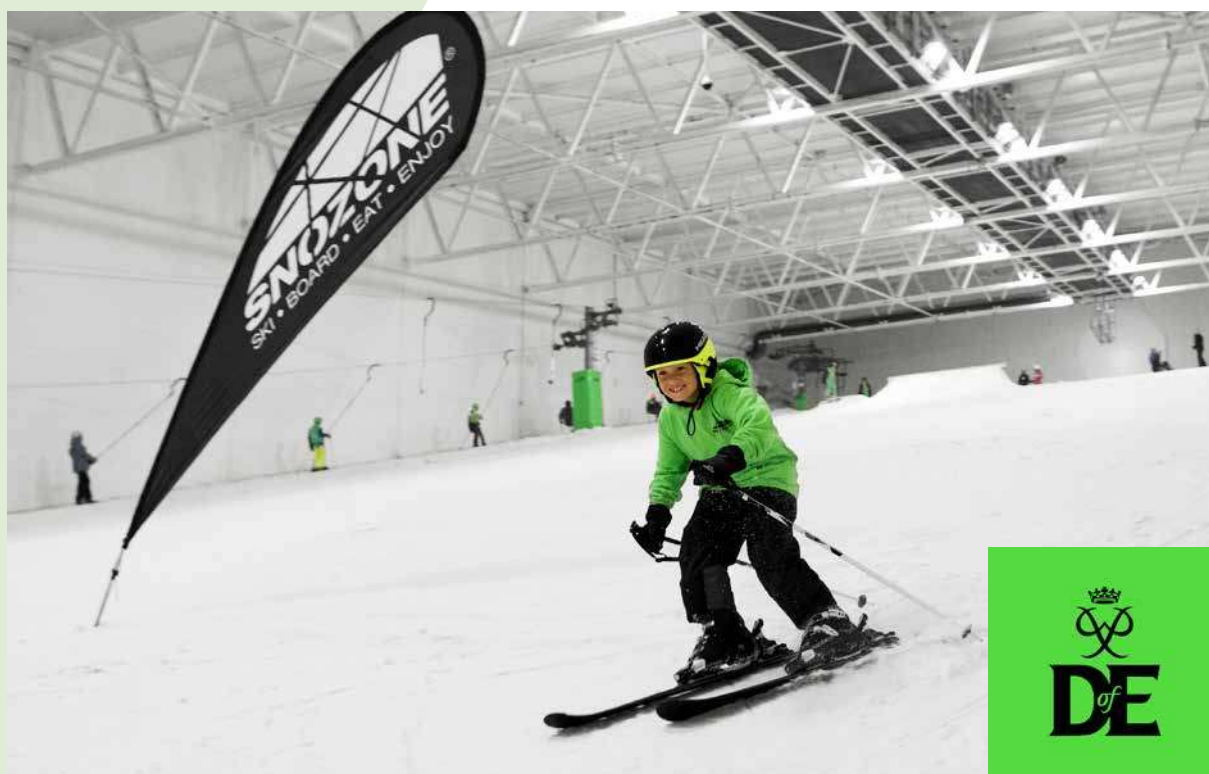
Duke of Edinburgh students are required to demonstrate personal progress and achievements against a selected competence in skiing or snowboarding.

Snozone supports those in the scheme to Learn, Improve, Develop and Practice in their

chosen snow sport. Assessment on progress is undertaken by our own Coaches via a “Record of Achievement” card. The participation requirement for the scheme is a minimum attendance of two hours per week over a thirteen-week period.

This activity is available for both skiers and snowboarders of all ability levels and is for students aged 14 to 24.

Who for?	Students (14-24 years of age)
Curriculum Links	PE / PSHE
Duration	13-week course 1 x 2-hour session per week
Adaptive Programme	1 x 60-minute session per week
Cost	£29.99 per student per week
Group Sizes	Max. 8 per discipline/ability group



SNOZONE'S UNIQUE CHILDREN'S ADVENTURE ACTIVITY

The Polar Experience



The Snozone Polar Experience is a unique, fun educational activity held on our snow slopes and also in our warmer meeting rooms!

It involves a practical problem-solving activity on the slope that will develop confidence, resilience and teamwork in addition to teaching students about the polar regions - all topped off with a fun sledging session!

It includes an invigorating trek where students navigate and ascend to the top of our 170m real snow slope (Mount Snozone!).

They will then assist in a survival themed emergency, setting up a camp and finally building a rescue sledge to bring a theoretically injured person off the mountain.

In the classroom, students will then learn the science behind snow and explore the polar regions and the differences between the Arctic

and Antarctic continents. Students will also learn about famous explorers and the wildlife of these regions to support key stage learning across history, geography, and science. In addition, the Polar Experience also includes an exhilarating sledging session!

The entire activity will take approximately 2.5 hours and is ideal for students aged 7-15.

Who for?	Students (7-15 years of age)
Curriculum Links	History, Geography, PE & Science
Duration	2.5 hours
Cost	£24.99 per student
Group Sizes	Min. 10 per session - Can accommodate 100+ in 4 groups of 25

A FIRST AID COURSE FOR CHILDREN - TO SUPPORT GOOD CITIZENSHIP

Mini Medics



The Mini Medics course is an accredited first aid course designed for children aged 7-12. We offer this course as a stand alone activity to promote the school curriculum's good citizenship programme

Our expert Coach will deliver an interactive learning workshop containing a syllabus approved by Nuco, who are the UK's leading independent provider for First Aid training and a partner of Snozone.

The course content is very light, interactive and enables children to practice using First Aid materials including CPR on manikins.

Children will learn how to treat basic wounds with resources that are available to them. We will encourage problem-solving in this section to support children in developing confidence. Children will be awarded with a certificate at the end of the course, which lasts no more than 2 hours including breaks.

Who for?	Students (7-12 years of age)
Curriculum Links	PSHE
Duration	1-2 hours
Cost	£13.99 per student
Group Sizes	Max. 30 per session

SKI AND SNOWBOARD LESSONS BEFORE THE ANNUAL SCHOOL TRIP - HELPING STUDENTS GET AHEAD!

Save money on expensive ski lessons abroad and make better use of the annual school ski trip!

We offer a whole range of lesson options to help you prepare your students for their trip to the mountains. If your students learn their skills here before they go on their trip, you'll be able to make more use of their time on the slopes when you get there!

You may have students who already can link turns and control their speed, so they can take the option of a reduced-price lift pass to practice on the slope, while lessons take place for the rest of the group!

Who for?	Students (7+ years of age) regardless of ability or disability: Beginner/Intermediate/Advanced
Curriculum Links	P.E.
Duration	1, 2 or 3 hour sessions (depending on age)
Cost	From £19.99 per student
Group Sizes	Max 8 for snowboarding and 10 for skiing, per ability group



SCHOOL'S OUT! REWARD YOUR STUDENTS!

Sledging

Towards the end of term, many schools like to offer their students different experiences as an end of term treat or to reward a great term's work!

Reward your students with a fun end of term treat, sledging down the slopes in teams competitively or just for fun!

Who for?	Everyone, 3 years of age plus!
Duration	30-minutes
Cost	£13.99 per child/student
Group Sizes	30 per session



SNOZONE ARE THE ONLY UK INDOOR OPERATOR TO OWN AND MANAGE A DISABILITY SNOW SCHOOL!

Snozone Disability Snowsports

Snozone is fully committed to providing 'sport for all' ensuring that everyone has the opportunity to experience snow sports regardless of their physical ability, disability, fitness levels or mental impairment.



This is a very specialist aspect of our work that enables guests of any age with sensory, cognitive and /or physical impairments to take part in snow sports.

Schools should discuss individual packages with our Snozone Disability Snowsports team or your Snozone contact, for further details regarding session times and pricing.

We will always shape a session to suit all people.



THE SNOW BADGE FOR SCOUTS AND GIRL GUIDES

This activity for Girl Guides and Scouts is a great introduction to skiing or snowboarding and a great overall introduction to learning a sport in general.

Children will be taught to ski or snowboard in a safe and fun learning environment and at a gentle pace, and will follow the same lesson structure as the Snozone ‘taster’ session, delivered by one of our expert Coaches.

At the end of the 90-minute activity, the children should be awarded with their Snow Sports badge by their Scout or Guide leader.



Who for?	Members of the Guides & Scouts Association (6-14 years of age)
Duration	90 minutes
Cost	£29.99 per person
Group Sizes	6 (ages 6-8), 8 (ages 8-14)



CHILDREN'S SCHOOL HOLIDAY CAMPS



Children aged 7-15 years can keep fit, learn a brand-new sport on real snow, meet new friends and also learn important life skills.

We offer an inclusive environment and always make provision for those with additional needs.

Snozone supports the school curriculum with the development of good citizenship. In addition to ski or snowboard lessons on our real snow slope, children will take part in activities including a junior first aid course called Mini Medics, conversational Spanish lessons and an introduction to sign language.

We provide two Camps:

- Base Camps - for children who want to learn to ski or snowboard or who have limited experience previously.
- All Mountain - for children with a bit more experience on the slope who want to improve their skills and technique.

Children will have a nutritional lunch, snacks and refreshments and these are included in the price. School Holiday Camps operate throughout each school holiday and they start at 08:30am and collection times are no later than 5:30pm. Snozone members have access to priority booking windows for the School Holiday camps.

WHY SNOZONE?

Our 170m indoor real snow slopes, safe environment and our friendly expert Coaches, provide the best place to learn, improve and advance skills.

There is no better place than Snozone to encourage young people to become involved in snow sports whilst at the same time improving their self-confidence, resilience, teamwork, leadership and responsibility skills.

- Make a commitment today and we will secure your space.
- Snozone will provide all the relevant **risk assessments and insurance** information you require.
- You will have a main point of contact who will also be here on the day to meet and greet your group.
- Your Snozone Coach will be with you throughout, so the students **will always** have a team member with them on the slope.



GET IN TOUCH

Call us on **03330 030 520**

Email us at Milton Keynes: enquiriesmk@snozoneuk.com

Email us at Yorkshire: enquiriesyorkshire@snozoneuk.com

Follow our socials



FAQS

What clothing do you recommend?

For all on-snow activities warm, waterproof clothing is recommended with long sleeves and long trousers. Helmets and gloves are mandatory.

Helmet hire is included in your ticket price, and if you or your students forget your gloves or warm socks, these can be purchased from our kiosks in each venue for very reasonable prices.

How much is equipment hire?

Helmets, skis, snowboards, boots and poles are all included in your ticket price so there is no additional charge.

Where can we store our belongings?

Lockers that are free to use, they just require you to remember your 4 digit combination to lock them. Our Yorkshire venue also has lockers that require a padlock. Your Snozone contact may also be able to provide you with details of where to safely store your groups belongings whilst participating in their on-snow activity.

Can we stay for lunch?

Yes, freshly prepared meals are available from our Alpine Kitchen from £4.99 per person. Speak to your Snozone contact when making your booking.

Help! I can't see the answer to my question here...

No problem. Further FAQs and our Terms & Conditions can be accessed via our website www.snozoneuk.com or call our Enquiries Team on **0333 003 0520** and they will be happy to help!



ACCESS GUIDE TO SNOZONE'S UK VENUES

Snozone Milton Keynes

Getting to Snozone Milton Keynes couldn't be easier...

Snozone Milton Keynes is located within the Xscape Centre, Milton Keynes.

Directions

Directions for getting here by train, bus & car can be found using our postcode: MK9 3XS

Snozone MK Venue Access

The Xscape Centre has 3 entrances: We recommend Snozone guests use the main entrance as it is the most accessible. There is ample parking to the front and side of the building. The Xscape centre charges for parking at the rate of £1.80 per hour. Snozone will pay for your parking by issuing you a 'pass' upon your arrival.

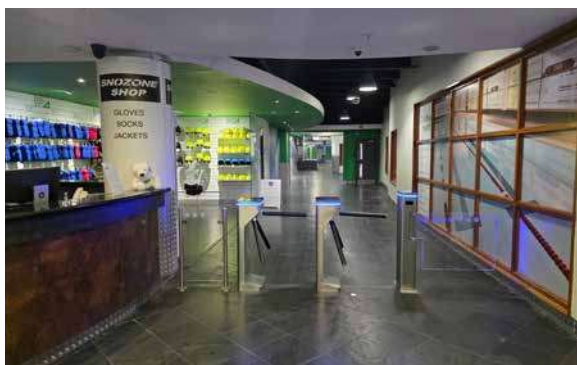


Arriving at Snozone Milton Keynes....

If you enter the Xscape Centre via one of the other two entrances, the Snozone reception can also be found by walking straight ahead. Here you can easily check-in using one of our self-service kiosks or ask for assistance from one of our friendly reception team members. If you are part of a school group, please mention your name to a member of the reception team and they will ensure your Snozone contact comes to meet you straightaway.



Once through reception, walk straight ahead up a slight incline and you will find large windows and a stepped viewing area to your left, where you can catch your first glimpse of our 170m real snow slope!



To your right we have separate male and female toilets (including disabled toilets) with communal changing areas and further ahead on the right we have our gift shop.

To your left, you will find our Alpine Kitchen restaurant accessed via 3 steps or continue ahead and slightly left for ramped access.

The Alpine Kitchen

Located opposite our gift shop, our Alpine Kitchen Restaurant is split level with stepped and ramp access available. It has large viewing windows that look out onto our slopes, and a small play area located at the far end to the right-hand side.

If you continue to the far end of the Alpine Kitchen Restaurant you will see a sign for our Alpine Meeting Rooms, and a staircase leading up to them on the 1st floor.



The Alpine Meeting Rooms

Our Alpine Meeting Rooms are located on the first floor and can be accessed by the main staircase from our Alpine Kitchen or by using the lift located in our equipment area

By lift...

Exit the lift on the 1st floor and turn immediately left, you will see the stairs to your right through a glass balustrade and our Mont Blanc meeting room directly ahead.



By stairs...

At the top of the stairs, you will see our Mont Blanc meeting room directly ahead, and Whistler meeting room slightly to your right.

If you continue turning to your right you will see a door to access additional male and female toilets (including a disabled toilet requiring a RADAR* key) and our Aspen Suite.



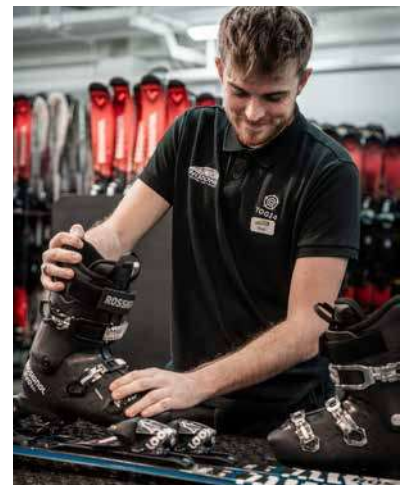
The equipment area

If you continue beyond the toilets and gift shop, keeping them to your right-hand side, you will arrive in our locker area.

We have combination lockers that require a 4 digit number and we recommend guests use something notable (e.g. their day/month of birthdate or their birth year).



Further ahead, and to your left, is where we give out ski's and snowboards and boots. **This is also where you hand back your equipment after use.**



Take your ticket to the counter and a member of our team will ask you a few questions to ensure we provide the correct fitting equipment for you, they will also help you to fit your boots if you need assistance. You will then be met by your Coach or a member of the team if you are doing a sledging activity and they will ask you to choose a helmet and will ensure you've fitted it correctly.

Our Helmets are colour coded: White XL, Grey L, Black M and Blue S.

The Coach or team member will then conduct a health & safety briefing, and lead you onto the slopes for you to begin your Snozone experience!



Snozone Yorkshire

Getting to Snozone Yorkshire couldn't be easier...

Snozone Yorkshire is located within the Xscape Centre, Castleford.

Snozone Yorkshire Venue Access

The Xscape Centre has one Main Entrance.

Arriving at Snozone Yorkshire.

The Snozone reception is located at the far end of the Xscape Centre on the ground floor, situated between Ellis Brigham and the Volcano Falls indoor golf venue.

At reception you can easily check-in using one of our self-service kiosks or ask for assistance from one of our friendly reception team members and they will ensure your Snozone contact comes to meet you straightaway.

Once through the turnstiles, you will have a view of the locker area immediately ahead, our equipment area and staired access to our Alpine Kitchen to your left and find our gift shop located to your right.

As you continue straight ahead into the locker area, you will find individual changing cubicles plus separate male and female toilets (including disabled toilets) with communal changing areas and additional lockers located on your right-hand side.

In the locker area you can also locate our lifts for access to our Alpine Kitchen and Alpine Meeting Rooms located on the 1st floor.

The equipment area

If you continue beyond the staircase and keep the locker area to your right-hand side, you will arrive in our equipment area.

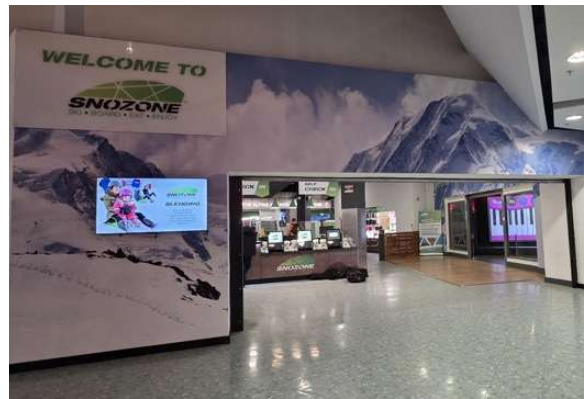
Take your ticket to the counter and a member of our team will ask you a few questions to ensure we provide the correct fitting equipment for you. They will also help you to fit your boots if you need assistance. You will then be met by your Coach or a member of the team if you are doing a sledging activity and they will ask you to choose a helmet and will ensure you've fitted it correctly.

Our helmets are colour coded: White XL, Grey L, Black M and Blue S.

The Coach or team member will then conduct a health & safety briefing, and lead you onto the slopes for you to begin your Snozone experience!

Directions

Directions for getting here by train, bus & car can be found using the postcode WF104TA.



The Alpine Kitchen

Located on the first floor, our Alpine Kitchen Restaurant is accessed via the staircase or by lift on the ground floor. Our Alpine Kitchen Restaurant has large viewing windows that look out onto our slopes, with access to our soft-play area located at the far end.



The Alpine Meeting Rooms

Our Alpine Meeting Rooms are located on the first floor and can be accessed by the main staircase or lifts both located in our Locker Area

By lift...

Exit the lift on the 1st floor and turn immediately right for the Alpine Kitchen Restaurant and soft-play area. Or, immediately left for the Alpine Meeting Rooms

By stairs...

At the top of the stairs, you will see our Alpine Kitchen Restaurant directly ahead

If you continue to your right you will see signs for the Alpine Meeting Rooms ahead

Enter through these doors for access to our K2, McKinley and Matterhorn Meeting Room Suites and additional male and female toilets (including a disabled toilet) .





We are always looking to improve our guest experience - and we welcome all your feedback!

Please use the QR Codes below to let us know your thoughts, ask any questions and find out what else Snozone has to offer.



To contact our Enquiries Team



To learn more about our schools offer
snozoneuk.com/schools



To learn more about Snozone Disability Snowsports
snozoneuk.com/disability-snowsports



Kaddi Yorkshire
Kaddi.com/snozoneyor



Kaddi Milton Keynes
Kaddi.com/snozonemk



5 time winner of the School Travel Awards



[WWW.SNOZONEUK.COM](https://www.snozoneuk.com)